

SPECIAL RELEASE

**Summary Inflation Report
 Consumer Price Index for the
 Bottom 30% Income Households
 (2018=100)**

**Zamboanga Peninsula
 November 2024**

Date of Release: 09 December 2024
 Reference No. 240900-2525

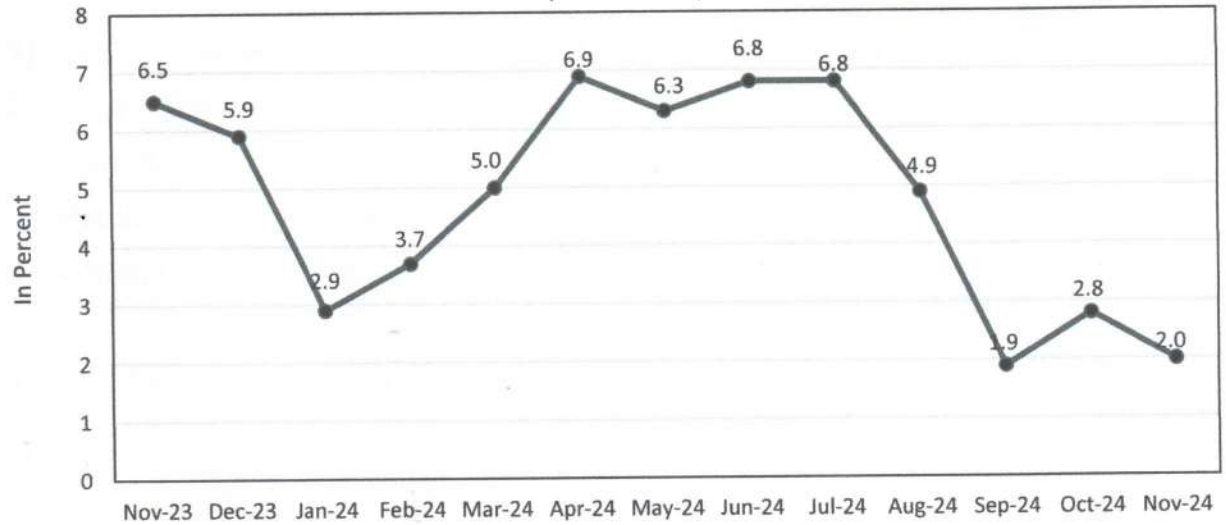
**Table A. Year-on-Year Inflation Rates,
 for the Bottom 30% Income Household, All Items
 In Percent
 (2018=100)**

Area	November 2023	October 2024	November 2024	Year-to-date*
Region IX	6.5	2.8	2.0	4.5
Zamboanga del Norte	8.4	2.7	1.2	3.5
Zamboanga del Sur	5.8	1.5	1.7	4.5
Zamboanga Sibugay	6.2	3.6	2.4	5.7
City of Zamboanga	4.7	4.2	3.2	4.9
City of Isabela	7.9	1.6	2.3	4.4

Source: Retail Price Survey of Commodities for the Generation of Consumer Price Index
 Philippine Statistics Authority

*Year-on-year change of average CPI for Jan.- Nov. 2023 vs. Jan.-Nov. 2024

Figure 1. Inflation Rates for the Bottom 30% Income Households in Zamboanga Peninsula, All Items (2018=100)



Source: Retail Price Survey of Commodities for the Generation of Consumer Price Index Philippine Statistics Authority

A. Zamboanga Peninsula

1. Inflation Rate for the Bottom 30% Income Households

The inflation rate in Zamboanga Peninsula for the bottom 30% income households decreased further at a rate of 2.0 percent in November 2024 from 2.8 October 2024. This brings the region's average inflation from January to November 2024 to 4.5 percent. In November 2023, inflation rate posted 6.5 percent. (Table A and Figure 1)

1.1 Main Drivers Behind the Downward Trend in the Inflation Rate for the Bottom 30% Income Households:

This month's lower inflation rate was primarily influenced by the year-on-year inflation in the indices of *Food and Non-alcoholic Beverages* which stood at 1.0 percent inflation in November 2024 from 2.3 percent in October 2024, *Personal care, and Miscellaneous Goods and Services* at 2.9 percent from 3.2 percent in the previous month and *Restaurants and accommodation services*, 5.3 percent from 5.4 percent in the previous month.

Additionally, lower inflation rates were observed in the following commodity groups:

- 1) *Furnishings, household equipment and routine household maintenance*, 3.6 percent from 3.8 percent; and
- 2) *Information and communication*, 0.3 percent from 0.4 percent.

In contrast, the following commodity groups posted higher annual increments as compared with their previous month's inflation rates:

- 1) *Alcoholic beverages and tobacco*, 8.7 percent from 8.6 percent;
- 2) *Housing, Water, Electricity, Gas and Other Fuels*, 5.6 percent from 4.8 percent;
- 3) *Transport*, (1.8) percent from (1.9) percent;
- 4) *Health*, 3.3 percent from 3.2 percent; and
- 5) *Recreation, sport and culture*, 8.3 percent from 8.2 percent.

Moreover, the following commodity groups retained their inflation rates during the month:

- 1) *Education services*, 4.9 percent;
- 2) *Clothing and footwear*, 1.0 percent; and
- 3) *Financial services*, (0.2) percent.

2.2 Main Contributors to the Inflation Rates for the Bottom 30% Income Households:

The following commodity groups were the top three contributors to the November 2024 overall inflation for the bottom 30% income households:

- 1) *Housing, Water, Electricity, Gas and Other Fuels*, 35.8 percent share or 0.72 percent;
- 2) *Food and Non-alcoholic Beverages*, 30.4 percent share or 0.61 percent; and,
- 3) *Restaurants and accommodation services*, 11.3 percent share or 0.23 percentage point.

Table B. Year-on-year Inflation Rates for the Bottom 30% Income Households
in Zamboanga Peninsula, All items in Percent
January 2020- November 2024
(2018=100)

MONTH	YEAR				
	2020	2021	2022	2023	2024
January	2.5	(1.1)	7.2	8.9	2.9
February	1.6	1.6	4.1	10.8	3.7
March	1.2	2.9	3.3	10.3	5.0
April	1.2	3.2	4.6	7.0	6.9
May	1.9	2.5	5.6	6.5	6.3
June	1.9	2.2	7.3	5.1	6.8
July	2.2	2.5	8.8	3.2	6.8
August	1.3	2.1	9.9	5.2	4.9
September	0.9	2.7	10.4	7.7	1.9
October	0.2	4.2	9.3	6.4	2.8
November	-0.2	4.9	8.9	6.5	2.0
December	-0.8	5.3	8.7	5.9	
Average	1.1	2.7	7.3	6.9	4.5

Source: Retail rice Survey of Commodities for the Generation of Consumer Price Index Philippine Statistics Authority

Inflation Rate by Commodity Group for the Bottom 30% Income Households in
ZAMBOANGA PENINSULA 2018=100

Commodity Group	Inflation		
	November 2023	October 2024	November 2024
FOOD AND NON-ALCOHOLIC BEVERAGES	9.9	2.3	1.0
FOOD	10.1	2.2	0.8
Cereals and cereal products	18.4	6.0	1.1
Cereals	20.9	6.5	0.8
Rice	26.6	7.2	1.5
Corn	10.4	5.2	(0.5)
Flour, Bread and Other Bakery Products, Pasta Products, And Other Cereals	4.8	2.9	2.7
Meat and other parts of slaughtered land animals	2.9	3.5	2.4
Fish and other seafood	0.1	(6.8)	(5.1)
Milk, other dairy products and eggs	12.9	6.3	3.3
Oils and fats	(3.0)	(2.5)	(1.3)
Fruits and nuts	21.0	16.7	14.2
Vegetables, tubers, plantains, cooking bananas and pulses	6.7	(3.2)	4.8
Sugar, confectionery and desserts	(0.9)	(6.6)	(5.6)
Ready-made food and other food products n.e.c.	4.9	5.8	5.1
ALCOHOLIC BEVERAGES AND TOBACCO	5.2	8.6	8.7
CLOTHING AND FOOTWEAR	2.6	1.0	1.0
HOUSING, WATER, ELECTRICITY, GAS AND OTHER FUELS	(3.2)	4.8	5.6
FURNISHINGS, HOUSEHOLD EQUIPMENT AND ROUTINE HOUSEHOLD MAINTENANCE	4.3	3.8	3.6
HEALTH	3.0	3.2	3.3
TRANSPORT	3.9	(1.9)	(1.8)
INFORMATION AND COMMUNICATION	1.2	0.4	0.3
RECREATION, SPORT AND CULTURE	4.9	8.2	8.3
EDUCATION SERVICES	7.1	4.9	4.9
RESTAURANTS AND ACCOMMODATION SERVICES	3.1	5.4	5.3
FINANCIAL SERVICES	0.0	(0.2)	(0.2)
PERSONAL CARE, AND MISCELLANEOUS GOODS AND SERVICES	4.1	3.2	2.9

Source: Retail Price Survey of Commodities for the Generation of Consumer Price Index Philippine Statistics Authority



2. Food Inflation

The *Food inflation* for the bottom 30% Income Households in Zamboanga Peninsula decelerated to 0.8 percent in November 2024 from 2.2 percent in October 2024. Meanwhile, the *food inflation* in November 2023 was higher at 10.1 percent.

2.1 Main Drivers to the Downward Trend of the Food Inflation for the Bottom 30% Income Households

The deceleration in the *food inflation* was mainly due to the slower increase in the index of *Cereals and Cereal Products* which posted 1.1 percent from 6.0 percent. Moreover, the categories of *Milk, other dairy products and eggs (ND)* and *Meat and other parts of slaughtered land animals (ND)* also contributed to the downtrend which stood at 3.3 percent from 6.3 percent, and 2.4 percent from 3.5 percent, respectively.

In addition, slower increments were also observed in the indices of *Fruits and Nuts (ND)* which posted 14.2 percent from 16.7 percent in the previous month, and *Ready-made food and other food products n.e.c. (ND)* which posted 5.1 percent from 5.8 percent in the previous month.

In contrast, the following food groups were observed to have accelerated faster during the month:

- 1) *Fish and other seafood (ND)*, (5.1) percent from (6.8) percent;
- 2) *Oils and fats (ND)*, (1.3) percent from (2.5) percent;
- 3) *Sugar, Confectionery and Desserts (ND)*, (5.6) percent from (6.6) percent; and
- 4) *Vegetables, tubers, plantains, cooking bananas and pulses (ND)*, 4.8 percent from (3.2) percent.

2.2 Main Contributors to the Food Inflation for the Bottom 30% Income Households:

Food Inflation contributed 19.3 percent share or 0.37 percentage points to the September 2024 for the Bottom 30% Income Households. Among the food groups, the main contributors to the food inflation during the month were the following:

- 1) *Cereals and cereal products*, with 74.3 percent share or 0.59 percentage points;
- 2) *Fruits and nuts (ND)* with 60.1 percent share or 0.48 percentage point; and
- 3) *Vegetables, tubers, plantains, cooking bananas and pulses (ND)*, 50.0 percent share or 0.40 percentage point.

Among the provinces in the region, Zamboanga City had the highest inflation for the bottom 30% income households with 3.2 percent inflation, followed by Zamboanga Sibugay with 2.4 percent and City of Isabela at 2.3 percent, then Zamboanga del Sur with 1.7 percent. Zamboanga del Norte recorded to have the lowest inflation rate at



rate at 1.2 percent.

Note: CPIs and inflation rates for the bottom 30% income households by region and by province and selected city are posted at the PSA website (<http://openstat.psa.gov.ph/>).


MEWCHUN WS. PAMARAN
Regional Director


MFET/ajdc

