

SPECIAL RELEASE

**Summary Inflation Report
 Consumer Price Index for the
 Bottom 30% Income Households
 (2018=100)**

**Zamboanga Peninsula
 July 2024**

Date of Release: 07 August 2024

Reference No. 240900- 1083

**Table A. Year-on-Year Inflation Rates,
 for the Bottom 30% Income Household, All Items
 In Percent
 (2018=100)**

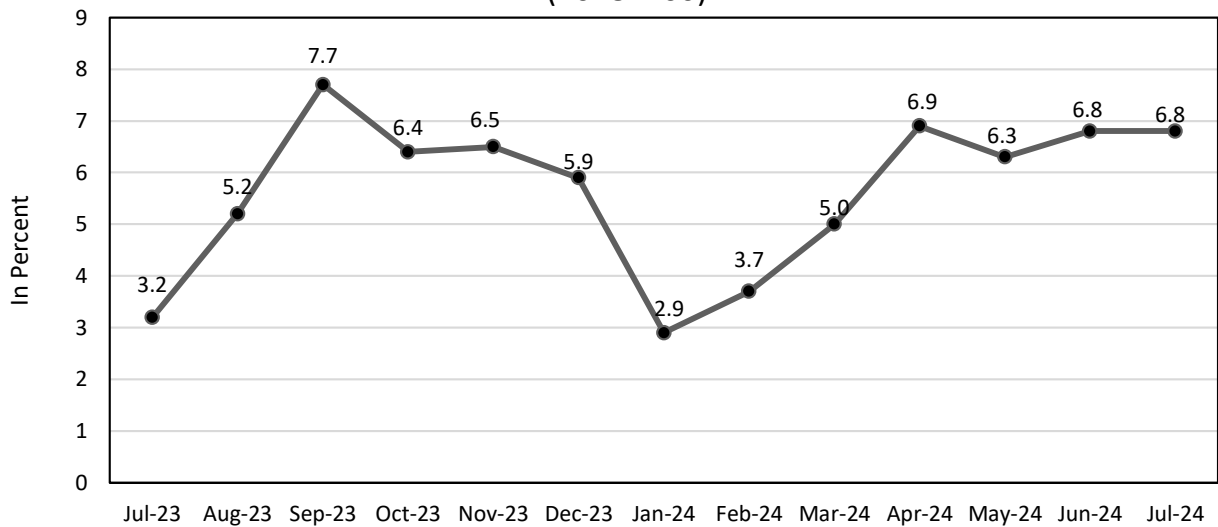
Area	July 2023	June 2024	July 2024	Year-to-date*
Region IX	3.2	6.8	6.8	5.5
Zamboanga del Norte	3.4	5.9	4.7	4.4
Zamboanga del Sur	3.1	8.0	7.4	5.6
Zamboanga Sibugay	2.3	8.0	8.8	6.9
City of Zamboanga	3.2	5.3	7.3	5.3
City of Isabela	5.0	6.3	6.3	5.8

Source: Retail Price Survey of Commodities for the Generation of Consumer Price Index
 Philippine Statistics Authority

*Year-on-year change of average CPI for January-July 2023 vs. January-July 2024



Figure 1. Inflation Rates for the Bottom 30% Income Households in Zamboanga Peninsula, All Items (2018=100)



Source: Retail Price Survey of Commodities for the Generation of Consumer Price Index
Philippine Statistics Authority

A. Zamboanga Peninsula

1. Inflation Rate for the Bottom 30% Income Households

The inflation rate in Zamboanga Peninsula for the bottom 30% income households remained constant at a rate of 6.8 percent in July 2024. This brings the region's average inflation from January to July 2024 to 5.5 percent. In July 2023, inflation rate posted 3.2 percent. (Table A and Figure 1)

1.1 Main Drivers Behind the Constant Trend in the Inflation Rate for the Bottom 30% Income Households:

This month's stable inflation rate was primarily influenced by the consistent year-on-year inflation in the index of *Furnishings, Household Equipment and Routine Household Maintenance* which stood at 5.4 percent inflation in both July 2024 and June 2024. Additionally, the price stability in the indices of *Health* at 3.2 percent; *Restaurants and Accommodation Services* which posted 5.6 percent; and, *Financial Services* with (0.2) percent also contributed to the steady overall inflation trend in the Zamboanga Peninsula.

Moreover, the following commodity groups posted higher annual increments as compared with their previous month's inflation rates:

- 1) *Housing, Water, Electricity, Gas and Other Fuels* at 3.7 percent from 3.2 percent;
- 2) *Transport*, 4.8 percent from 4.0 percent;



- 3) *Information and Communication* with 0.4 percent from 0.3 percent;
- 4) *Recreation, Sport and Culture*, 10.2 percent from 9.5 percent;
- 5) *Education Services*, 7.7 percent from 7.1; and,
- 6) *Personal care, and Miscellaneous Goods and Services*, 4.0 percent from 3.8 percent.

In contrast, lower inflation rates during the month were recorded in the categories of *Food and Non-alcoholic Beverages* with 8.3 percent from 8.7 percent; *Alcoholic Beverages and Tobacco* at 8.0 percent from 8.4 percent; and, *Clothing and Footwear* stood at 1.5 percent from 1.6 percent in the previous month.

2.2 Main Contributors to the Inflation Rates for the Bottom 30% Income Households:

The following commodity groups were the top three contributors to the July 2024 overall inflation for the bottom 30% income households:

- 1) *Food and Non-alcoholic Beverages* with 75.6 percent share or 5.1 percentage points;
- 2) *Housing, Water, Electricity, Gas and Other Fuels* with 7.1 percent share or 0.5 percentage point; and,
- 3) *Transport* with 3.9 percent share or 0.3 percentage point.



Table B. Year-on-year Inflation Rates for the Bottom 30% Income Households
in Zamboanga Peninsula, All items in Percent
January 2020- July 2024
(2018=100)

MONTH	YEAR				
	2020	2021	2022	2023	2024
January	2.5	(1.1)	7.2	8.9	2.9
February	1.6	1.6	4.1	10.8	3.7
March	1.2	2.9	3.3	10.3	5.0
April	1.2	3.2	4.6	7.0	6.9
May	1.9	2.5	5.6	6.5	6.3
June	1.9	2.2	7.3	5.1	6.8
July	2.2	2.5	8.8	3.2	6.8
August	1.3	2.1	9.9	5.2	
September	0.9	2.7	10.4	7.7	
October	0.2	4.2	9.3	6.4	
November	-0.2	4.9	8.9	6.5	
December	-0.8	5.3	8.7	5.9	
Average	1.1	2.7	7.3	6.9	5.5

**Source: Retail Price Survey of Commodities for the Generation of Consumer Price Index
Philippine Statistics Authority**



Inflation Rate by Commodity Group for the Bottom 30% Income Households in
ZAMBOANGA PENINSULA 2018=100

Commodity Group	Inflation		
	July 2023	June 2024	July 2024
FOOD AND NON-ALCOHOLIC BEVERAGES	3.5	8.7	8.3
FOOD	3.4	9.0	8.7
Cereals and cereal products	5.0	20.7	19.3
Cereals	5.1	23.7	22.0
Rice	5.4	25.0	22.7
Corn	4.7	21.0	20.4
Flour, Bread and Other Bakery Products, Pasta Products, And Other Cereals	4.3	4.4	4.6
Meat and other parts of slaughtered land animals	(1.1)	1.0	1.7
Fish and other seafood	(6.1)	(4.4)	(4.8)
Milk, other dairy products and eggs	7.0	2.0	2.1
Oils and fats	0.2	(5.5)	(5.7)
Fruits and nuts	9.1	13.2	10.9
Vegetables, tubers, plantains, cooking bananas and pulses	18.3	4.1	6.0
Sugar, confectionery and desserts	16.4	(6.4)	(7.1)
Ready-made food and other food products n.e.c.	3.5	14.6	15.2
ALCOHOLIC BEVERAGES AND TOBACCO	6.2	8.4	8.0
CLOTHING AND FOOTWEAR	2.5	1.6	1.5
HOUSING, WATER, ELECTRICITY, GAS AND OTHER FUELS	2.3	3.2	3.7
FURNISHINGS, HOUSEHOLD EQUIPMENT AND ROUTINE HOUSEHOLD MAINTENANCE	4.3	5.4	5.4
HEALTH	3.2	3.2	3.2
TRANSPORT	(3.6)	4.0	4.8
INFORMATION AND COMMUNICATION	1.3	0.3	0.4
RECREATION, SPORT AND CULTURE	4.9	9.5	10.2
EDUCATION SERVICES	3.0	7.1	7.7
RESTAURANTS AND ACCOMMODATION SERVICES	6.6	5.6	5.6
FINANCIAL SERVICES	0.0	(0.2)	(0.2)
PERSONAL CARE, AND MISCELLANEOUS GOODS AND SERVICES	3.8	3.8	4.0

Source: Retail Price Survey of Commodities for the Generation of Consumer Price Index Philippine Statistics Authority



2. Food Inflation

The *Food inflation* for the bottom 30% Income Households in Zamboanga Peninsula decelerated to 8.7 percent in July 2024 from 9.0 percent in June 2024. Meanwhile, the *food inflation* in July 2023 was lower at 3.4 percent.

2.1 Main Drivers to the Downward Trend of the Food Inflation for the Bottom 30% Income Households

The deceleration in the *food inflation* was mainly due to the slower increase in the index of *Cereals and Cereal Products* which posted 19.3 percent from 20.7 percent. Moreover, the categories of *Fish and Other Seafood (ND)* and *Fruits and Nuts* also contributed to contributed to the downtrend which stood at (4.8) percent from (4.4) percent, and 10.9 percent from 13.2 percent, respectively.

In addition, slower increments were also observed in the indices of *Sugar, Confectionery and Desserts (ND)* at (7.1) percent, and *Oils and Fats (ND)* with (5.7) percent from their respective inflation rates at (6.4) percent and (5.5) percent in the previous month.

In contrast, the following food groups were observed to have accelerated faster during the month:

- 1) *Meat and other parts of slaughtered land animals (ND)*, 1.7 percent from 1.0 percent;
- 2) *Milk, other dairy products and eggs (ND)* with 2.1 percent from 2.0 percent;
- 3) *Vegetables, tubers, plantains, cooking bananas and pulses (ND)*, 6.0 percent from 4.1 percent; and,
- 4) *Ready-made food and other food products n.e.c. (ND)* at 15.2 percent from 14.6 percent. 13.2 percent from 13.7 percent; and

2.2 Main Contributors to the Food Inflation for the Bottom 30% Income Households:

Food Inflation contributed 73.4 percent share or 5 percentage points to the July 2024 for the Bottom 30% Income Households. Among the food groups, the main contributors to the food inflation during the month were the following:

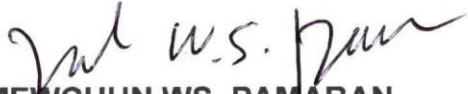
- 1) *Cereals and cereal products*, with 70.8 percent share or 4.8 percentage points;
- 2) *Ready-made food and other food products n.e.c (ND)* with 3.6 percent share or 0.3 percentage point; and
- 3) *Vegetables, tubers, plantains, cooking bananas and pulses (ND)* with 3.4 percent share or 0.2 percentage point.

Among the provinces in the region, Zamboanga Sibugay had the highest inflation for the bottom 30% income households with 8.8 percent inflation, followed by Zamboanga del Sur at 7.4 percent, and Zamboanga City with 7.3 percent. The Zamboanga del Norte recorded to have



the lowest inflation rate at 4.7 percent, while the City of Isabela remained constant at a rate of 6.3 percent.

Note: CPIs and inflation rates for the bottom 30% income households by region and by province and selected city are posted at the PSA website (<http://openstat.psa.gov.ph/>).



MEWCHUN WS. PAMARAN

Regional Director

MFET/MGCN//adix/bi



PSA RSSO IX, Dagdag Building, Baliwasan, Zamboanga City, Philippines,
Telephone: 957 – 4636 Local 109
www.psa.gov.ph