

SPECIAL RELEASE

**Summary Inflation Report
 Consumer Price Index for the
 Bottom 30% Income Households
 (2018=100)**

**Zamboanga Peninsula
 December 2024**

Date of Release: 10 January 2025

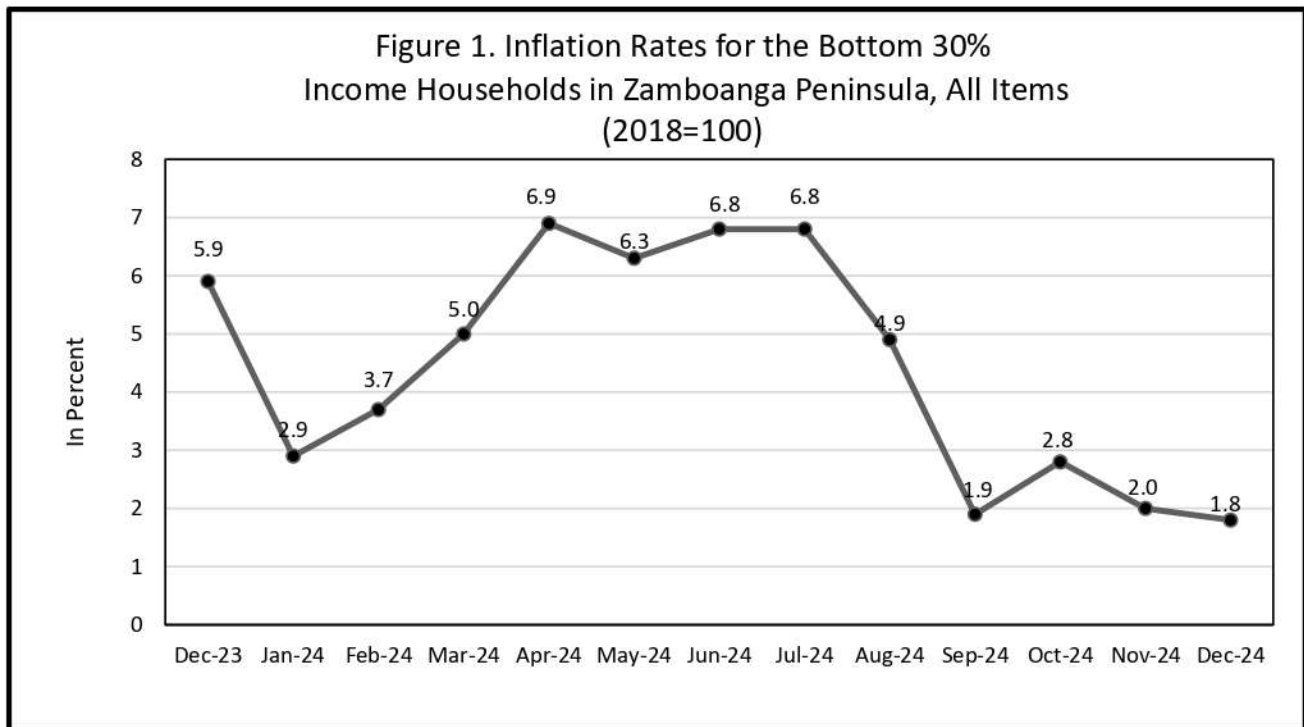
Reference No. 250900-0032

**Table A. Year-on-Year Inflation Rates,
 for the Bottom 30% Income Household, All Items
 In Percent
 (2018=100)**

Area	December 2023	November 2024	December 2024	Year-to-Date*
Region IX	5.9	2.0	1.8	4.3
Zamboanga del Norte	6.4	1.2	1.1	3.3
Zamboanga del Sur	5.3	1.7	0.9	4.2
Zamboanga Sibugay	6.6	2.4	2.2	5.4
City of Zamboanga	4.8	3.2	3.2	4.7
City of Isabela	7.9	2.3	3.2	4.3

*Source: Retail Price Survey of Commodities for the Generation of Consumer Price Index
 Philippine Statistics Authority*

**Year-on-year change of average CPI for January to December 2023 vs. January to December 2024*



Source: Retail Price Survey of Commodities for the Generation of Consumer Price Index Philippine Statistics Authority

A. Zamboanga Peninsula

1. Inflation Rate for the Bottom 30% Income Households

The inflation rate in Zamboanga Peninsula for the bottom 30% income households decreased further at a rate of 1.8 percent in December 2024 from 2.0 November 2024. This brings the region’s average inflation from January to December 2024 to 4.3 percent. In December 2023, inflation rate posted 5.9 percent. (Table A and Figure 1)

1.1 Main Drivers Behind the Downward Trend in the Inflation Rate for the Bottom 30% Income Households:

This month’s lower inflation rate was primarily influenced by the year-on-year inflation in the index of *Food and Non-alcoholic Beverages* which stood at 0.0 percent inflation in December 2024 from 1.0 percent in November 2024.

In contrast, the following commodity groups posted higher annual increments as compared with their previous month’s inflation rates:

- 1) *Alcoholic beverages and tobacco*, 8.9 percent from 8.7 percent;
- 2) *Housing, Water, Electricity, Gas and Other Fuels*, 6.5 percent from 5.6 percent;
- 3) *Furnishings, household equipment and routine household maintenance*, 3.7 percent from 3.6 percent;



- 4) *Health*, 3.5 percent from 3.3 percent;
- 5) *Transport*, 1.6 percent from (1.8) percent;
- 6) *Recreation, sport and culture*, 8.4 percent from 8.3 percent;
- 7) *Restaurants and accommodation services*, 5.9 percent from 5.3 percent; and
- 8) *Personal care, and Miscellaneous Goods and Services* at 3.0 percent from 2.9 percent.

Moreover, the following commodity groups retained their inflation rates during the month:

- 1) *Education services*, 4.9 percent;
- 2) *Information and communication*, 0.3 percent;
- 3) *Clothing and footwear*, 1.0 percent; and
- 4) *Financial services*, (0.2) percent.

2.2 Main Contributors to the Inflation Rates for the Bottom 30% Income Households:

The following commodity groups were the top three contributors to the December 2024 overall inflation for the bottom 30% income households:

- 1) *Housing, Water, Electricity, Gas and Other Fuels*, 37.9 percent share or 0.86 percent;
- 2) *Restaurants and accommodation services*, 14.5 percent share or 0.26 percentage point; and
- 3) *Alcoholic beverages and tobacco*, 11.9 percent share or 0.21 percentage point.



Table B. Year-on-Year Inflation Rates for the Bottom 30% Income Households
in Zamboanga Peninsula, All items in Percent
January 2020 to December 2024
(2018=100)

MONTH	YEAR				
	2020	2021	2022	2023	2024
January	2.5	(1.1)	7.2	8.9	2.9
February	1.6	1.6	4.1	10.8	3.7
March	1.2	2.9	3.3	10.3	5.0
April	1.2	3.2	4.6	7.0	6.9
May	1.9	2.5	5.6	6.5	6.3
June	1.9	2.2	7.3	5.1	6.8
July	2.2	2.5	8.8	3.2	6.8
August	1.3	2.1	9.9	5.2	4.9
September	0.9	2.7	10.4	7.7	1.9
October	0.2	4.2	9.3	6.4	2.8
November	-0.2	4.9	8.9	6.5	2.0
December	-0.8	5.3	8.7	5.9	1.8
Average	1.1	2.7	7.3	6.9	4.3

Source: Retail rice Survey of Commodities for the Generation of Consumer Price Index Philippine Statistics Authority



Inflation Rate by Commodity Group for the Bottom 30% Income Households in
ZAMBOANGA PENINSULA 2018=100

Commodity Group	Inflation		
	December 2023	November 2024	December 2024
FOOD AND NON-ALCOHOLIC BEVERAGES	9.3	1.0	0.0
FOOD	9.7	0.8	(0.3)
Cereals and cereal products	19.1	1.1	(2.5)
Cereals	21.8	0.8	(3.4)
Rice	28.4	1.5	(2.7)
Corn	9.6	(0.5)	(4.8)
Flour, Bread and Other Bakery Products, Pasta Products, And Other Cereals	4.7	2.7	2.7
Meat and other parts of slaughtered land animals	2.8	2.4	2.0
Fish and other seafood	1.4	(5.1)	(1.0)
Milk, other dairy products and eggs	13.3	3.3	2.5
Oils and fats	(2.6)	(1.3)	(0.9)
Fruits and nuts	11.6	14.2	15.5
Vegetables, tubers, plantains, cooking bananas and pulses	(1.2)	4.8	0.7
Sugar, confectionery and desserts	(2.0)	(5.6)	(3.8)
Ready-made food and other food products n.e.c.	5.4	5.1	4.3
ALCOHOLIC BEVERAGES AND TOBACCO	5.4	8.7	8.9
CLOTHING AND FOOTWEAR	2.4	1.0	1.0
HOUSING, WATER, ELECTRICITY, GAS AND OTHER FUELS	(5.0)	5.6	6.5
FURNISHINGS, HOUSEHOLD EQUIPMENT AND ROUTINE HOUSEHOLD MAINTENANCE	4.0	3.6	3.7
HEALTH	2.8	3.3	3.5
TRANSPORT	3.7	(1.8)	1.6
INFORMATION AND COMMUNICATION	1.2	0.3	0.3
RECREATION, SPORT AND CULTURE	4.3	8.3	8.4
EDUCATION SERVICES	7.1	4.9	4.9
RESTAURANTS AND ACCOMMODATION SERVICES	3.1	5.3	5.9
FINANCIAL SERVICES	0.0	(0.2)	(0.2)
PERSONAL CARE, AND MISCELLANEOUS GOODS AND SERVICES	3.7	2.9	3.0

Source: Retail Price Survey of Commodities for the Generation of Consumer Price Index Philippine Statistics Authority



2. Food Inflation

The *Food inflation* for the bottom 30% Income Households in Zamboanga Peninsula decelerated to (0.3) percent in December 2024 from 0.8 percent in November 2024. Meanwhile, the *food inflation* in December 2023 was higher at 9.7 percent.

2.1 Main Drivers to the Downward Trend of the Food Inflation for the Bottom 30% Income Households

The deceleration in the *food inflation* was mainly due to the slower increase in the index of *Cereals and Cereal Products* which posted (2.5) percent from 1.1 percent. Moreover, the categories of *Vegetables, tubers, plantains, cooking bananas and pulses (ND)* and *Milk, other dairy products and eggs (ND)* also contributed to the downtrend which stood at 0.7 percent from 4.8 percent, and 2.5 percent from 3.3 percent, respectively.

In addition, slower increments were also observed in the indices of *Meat and other parts of slaughtered land animals (ND)* which posted 2.0 percent from 2.4 percent in the previous month, and *Ready-made food and other food products n.e.c. (ND)* which posted 4.3 percent from 5.1 percent in the previous month.

In contrast, the following food groups were observed to have accelerated faster during the month:

- 1) *Fruits and Nuts (ND)*, 15.5 percent from 14.2 percent;
- 2) *Fish and other seafood (ND)*, (1.0) percent from (5.1) percent;
- 3) *Oils and fats (ND)*, (0.9) percent from (1.3) percent;
- 4) *Sugar, Confectionery and Desserts (ND)*, (3.8) percent from (5.6) percent;

2.2 Main Contributors to the Food Inflation for the Bottom 30% Income Households:

Food Inflation contributed 19.3 percent share or 0.37 percentage points to the September 2024 for the Bottom 30% Income Households. Among the food groups, the main contributors to the food inflation during the month were the following:

- 1) *Cereals and cereal products*, with 225.1 percent share or (0.68) percentage point;
- 2) *Fruits and nuts (ND)* with 36.9 percent share or (0.11) percentage point; and
- 3) *Vegetables, tubers, plantains, cooking bananas and pulses (ND)*, 17.1 percent share or (0.05) percentage point.



Among the provinces in the region, Zamboanga City and City of Isabela both had the highest inflation for the bottom 30% income households with 3.2 percent inflation, followed by Zamboanga Sibugay with 2.2 percent, then Zamboanga del Norte with 1.1 percent. Zamboanga del Sur recorded to have the lowest inflation rate at 0.9 percent.

Note: CPIs and inflation rates for the bottom 30% income households by region and by province and selected city are posted at the PSA website (<http://openstat.psa.gov.ph/>).

fir:
Am
MEWCHUN WS. PAMARAN
Regional Director

Am
GBS/ajoc