



SPECIAL RELEASE

**Summary Inflation Report
Consumer Price Index for the
Bottom 30% Income Households
(2018=100)**

**Zamboanga City
December 2024**

Date of Release: 10 December 2024
Reference No. 250900-0032

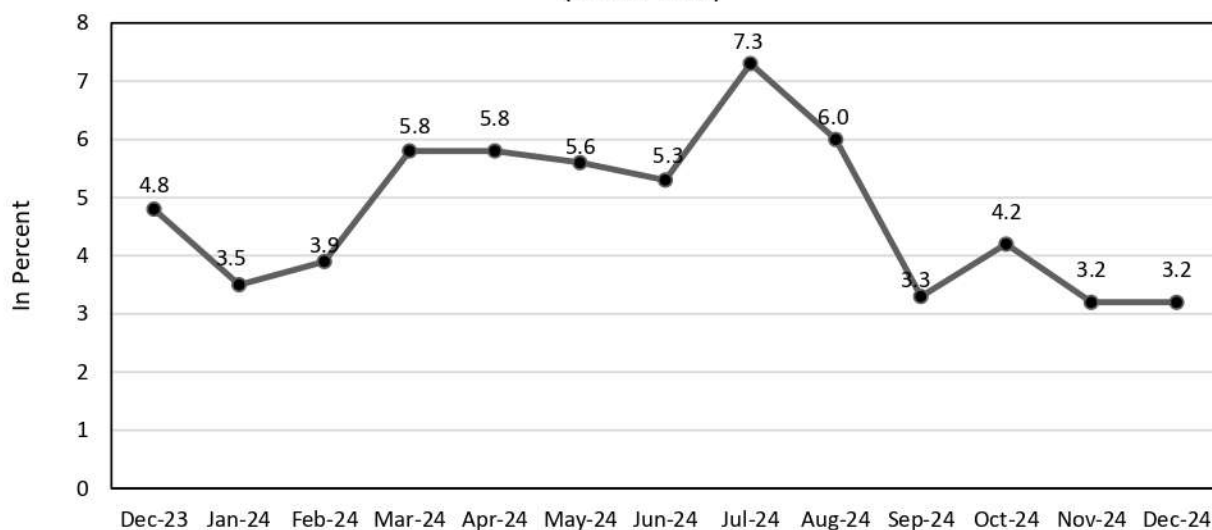
**Table A. Year-on-Year Inflation Rates,
for the Bottom 30% Income Household, All Items
In Percent
(2018=100)**

Area	December 2023	November 2024	December 2024	Year-To-Date*
Region IX	5.9	2.0	1.8	4.3
City of Zamboanga	4.8	3.2	3.2	4.7

Source: Retail Price Survey of Commodities for the Generation of Consumer Price Index
Philippine Statistics Authority
*Year-On-Year change of average CPI for January to December 2023 vs.
January to December 2024



Figure 1. Inflation Rates for the Bottom 30% Income Households in Zamboanga City, All Items (2018=100)



Source: Retail Price Survey of Commodities for the Generation of Consumer Price Index Philippine Statistics Authority

A. Zamboanga City

1. Inflation Rate for the Bottom 30% Income Households

Zamboanga City maintained a steady inflation rate of 3.2 percent in November 2024 and December 2024 for the bottom 30% income bracket, indicating a minimal change in the prices of the commodities during the month. This was lower than the 4.8 percent inflation recorded in December 2023. In addition, the city's average inflation from January to December 2024 stood at 4.7 percent (Refer to Table A and Figure 1).

A stable inflation was observed in the *Education Services*, which remained at 6.1 percent in both November and December 2024. Similarly, the inflation rates within the categories of *Information and Communication* at 0.1 percent, and *Financial Services* with 0.0 percent were also consistent with those recorded in the previous month.

In comparison, higher inflation was recorded in the following indices:

- a. *Housing, Water, Electricity, Gas and Other Fuels*, with 10.2 percent from 9.8 percent in the previous month;
- b. *Furnishings, Household Equipment, and Routine Household Maintenance* at 7.1 percent from 6.5 percent;
- c. *Recreation, Sport and Culture*, 6.6 percent from 5.9 percent;
- d. *Health*, 5.8 percent from 5.1 percent;
- e. *Restaurants and Accommodation Services* recorded 4.8 percent from 3.8 percent in November 2024;
- f. *Personal Care and Miscellaneous Goods and Services*, 3.0 percent from 2.7 percent;



PSA RSSO IX, Dagdag Building, San Jose Road, Baliwasan, Zamboanga City
 Telephone: (062) 957-4636 Local 109
rss09@psa.gov.ph

- g. *Clothing and Footwear* with 1.8 percent from 1.4 percent; and,
- h. *Transport*, 0.3 percent from (0.9) percent.

Meanwhile, the categories of *Alcoholic Beverages and Tobacco*, and *Food and Non-Alcoholic Beverages* had lower annual increments, with 4.4 percent from 4.5 percent, and 1.5 percent from 1.8 percent, respectively.

1.1 Main Contributors to the Inflation Rate for the Bottom 30% Income Households

The top three (3) commodity groups contributing to the December 2024 inflation rate for the bottom 30% were the following:

- a) *Housing, Water, Electricity, Gas and Other Fuels*, contributing 51.9 percent share or 1.7 percentage points;
- b) *Food and Non-alcoholic Beverages* with 26.5 percent share or 0.9 percentage point; and,
- c) *Restaurants and Accommodation Services*, contributing 6.9 percent share or 0.2 percentage point.



PSA RSSO IX, Dagdag Building, San Jose Road, Baliwasan, Zamboanga City
Telephone: (062) 957-4636 Local 109
rss09@psa.gov.ph

Table B. Year-on-year Inflation Rates for the Bottom 30% Income Households
in Zamboanga City, All items in Percent
January 2020 to December 2024
(2018=100)

MONTH	YEAR				
	2020	2021	2022	2023	2024
January	3.3	-0.3	4.9	6.3	3.5
February	2.9	1.5	3.0	7.4	3.9
March	2.3	2.6	1.6	6.9	5.8
April	2.1	2.9	2.6	5.4	5.8
May	3.0	1.5	3.9	5.0	5.6
June	2.6	1.6	5.5	4.5	5.3
July	2.8	1.2	6.5	3.2	7.3
August	2.1	1.9	6.6	4.6	6.0
September	1.9	3.6	6.5	5.8	3.3
October	1.8	3.6	6.5	5.1	4.2
November	1.3	3.1	8.1	4.7	3.2
December	0.3	3.1	7.6	4.8	3.2
Average	2.2	2.2	5.3	5.3	4.7

**Source: Retail Price Survey of Commodities for the Generation of Consumer Price Index
Philippine Statistics Authority**



PSA RSO IX, Dagdag Building, San Jose Road, Baliwasan, Zamboanga City
Telephone: (062) 957-4636 Local 109
rss09@psa.gov.ph

Certificate No. PHP
QMS 24 93 0203 - 001

Table C. Inflation Rate by Commodity Group for the Bottom 30% Income Households in
ZAMBOANGA CITY
2018=100

Commodity Group	Inflation		
	December 2023	November 2024	December 2024
FOOD AND NON-ALCOHOLIC BEVERAGES	8.7	1.8	1.5
Food	9.4	2.0	1.5
Cereals and cereal products	21.2	(0.8)	(2.3)
Cereals	28.0	(2.1)	(4.0)
Rice	28.4	(2.2)	(4.1)
Corn	7.7	(1.3)	1.0
Flour, Bread and Other Bakery Products, Pasta Products, And Other Cereals	1.0	3.8	4.0
Meat and other parts of slaughtered landanimals	(0.5)	2.8	3.9
Fish and other seafood	(1.5)	1.4	1.7
Milk, other dairy products and eggs	12.3	5.0	2.9
Oils and fats	1.2	0.0	1.3
Fruits and nuts	6.4	30.9	33.2
Vegetables, tubers, plantains, cooking bananas and pulses	10.9	3.0	3.1
Sugar, confectionery and desserts	8.0	0.1	0.2
Ready-made food and other food products n.e.c.	(1.1)	5.0	3.4
ALCOHOLIC BEVERAGES AND TOBACCO	0.4	4.5	4.4
CLOTHING AND FOOTWEAR	1.3	1.4	1.8
HOUSING, WATER, ELECTRICITY, GAS AND OTHER FUELS	(4.3)	9.8	10.2
FURNISHINGS, HOUSEHOLD EQUIPMENT AND ROUTINE HOUSEHOLD MAINTENANCE	(0.8)	6.5	7.1
HEALTH	(1.1)	5.1	5.8
TRANSPORT	4.1	(0.9)	0.3
INFORMATION AND COMMUNICATION	0.0	0.1	0.1
RECREATION, SPORT AND CULTURE	1.3	5.9	6.6
EDUCATION SERVICES	18.5	6.1	6.1
RESTAURANTS AND ACCOMMODATION SERVICES	0.2	3.8	4.8
FINANCIAL SERVICES	0.0	0.0	0.0
PERSONAL CARE, AND MISCELLANEOUS GOODS AND SERVICES	2.1	2.7	3.0

Source: Retail Price Survey of Commodities for the Generation of Consumer Price Index
Philippine Statistics Authority



PSA RSSO IX, Dagsdag Building, San Jose Road, Baliwasan, Zamboanga City
Telephone: (062) 957-4636 Local 109
rss09@psa.gov.ph

2. Food Inflation

The monthly *Food inflation* for the bottom 30% Income Households in Zamboanga City decelerated to 1.5 percent in December 2024 from 2.0 percent in November 2024. However, this was comparatively lower than the recorded *Food inflation* in December 2023, which stood at 9.4 percent.

2.1 Main Drivers to the Downtrend of Food Inflation

The deceleration of Food inflation in December 2024 was primarily driven by slower annual growth rate in *Cereals and cereal products (ND)* index, which posted (2.3) percent from (0.8) percent in the previous month. Moreover, the decrease in prices within the categories of *Milk, other dairy products and eggs (ND)*, and *Ready-made food and other food products n.e.c. (ND)* also contributed to the downtrend which stood at 2.9 percent from 5.0 percent, and 3.4 percent from 5.0 percent, respectively.

On the contrary, an increase in prices were recorded in the following food commodities:

- a. *Fruits and Nuts (ND)*, with 33.2 percent from 30.9 percent;
- b. *Meat and other parts of slaughtered land animals (ND)* at 3.9 from 2.8 percent;
- c. *Vegetables, tubers, plantains, cooking bananas and pulses (ND)*, 3.1 percent from 3.0 percent;
- d. *Fish and Other Seafood (ND)*, 1.7 percent from 1.4 percent;
- e. *Oils and Fats (ND)* posted 1.3 percent from 0.0 percent; and,
- f. *Sugar, confectionery and desserts (ND)*, 0.2 percent from 0.1 percent inflation in November 2024.



PSA RSSO IX, Dagdag Building, San Jose Road, Baliwasan, Zamboanga City
Telephone: (062) 957-4636 Local 109
rss09@psa.gov.ph

2.2 Main Contributors to the Food Inflation

Food inflation contributed 25.9 percent share or 0.8 percentage point to the overall inflation for the Bottom 30% Income Households in Zamboanga City. Moreover, the top three (3) Food groups contributing to the December 2024 food inflation were the following:

- a) *Fruits and nuts (ND)*, contributing 75.8 percent share or 1.1 percentage points;
- b) *Meat and other parts of slaughtered land animals (ND)*, contributing 30.7 percent share or 0.5 percentage point; and,
- c) *Fish and other seafood (ND)* with 29.0 percent share or 0.4 percentage point.

Note: CPIs and inflation rates for the bottom 30% income households by region and by province and selected city are posted at the PSA website (<http://openstat.psa.gov.ph/>).

for : 
MEWCHUN WS. PAMARAN
Regional Director


GDS/MGCN/kxbl



PSA RSSO IX, Dagdag Building, San Jose Road, Baliwasan, Zamboanga City
Telephone: (062) 957-4636 Local 109
rss09@psa.gov.ph