



SPECIAL RELEASE

**Summary Inflation Report
 Consumer Price Index for the
 Bottom 30% Income Households
 (2018=100)**

**Zamboanga City
 January 2025**

Date of Release: 07 January 2025
 Reference No. 250900-0191

**Table A. Year-on-Year Inflation Rates,
 for the Bottom 30% Income Household, All Items
 In Percent
 (2018=100)**

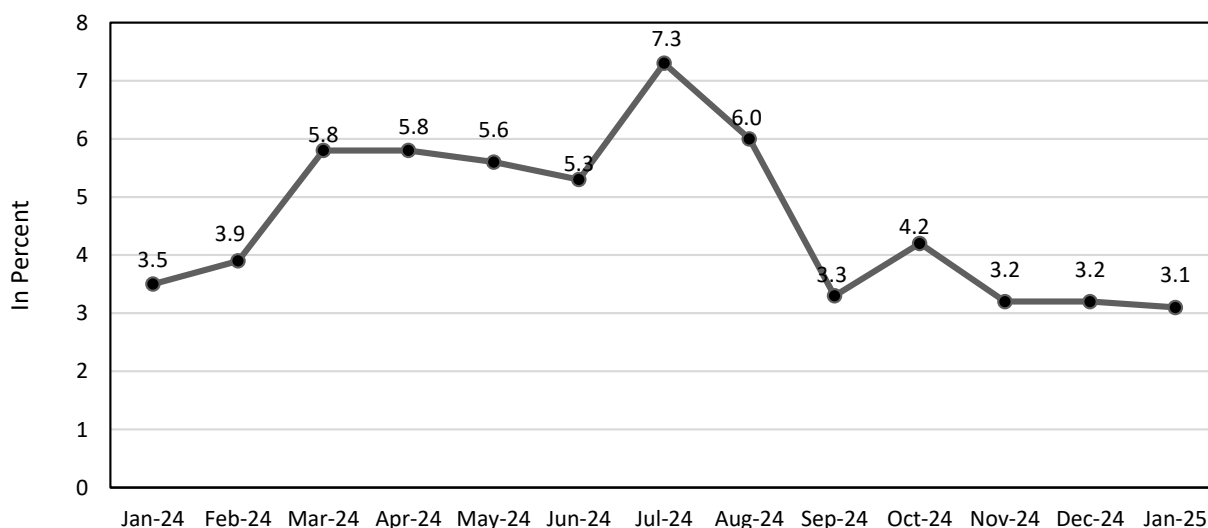
Area	January 2024	December 2024	January 2025	Year-To-Date*
Region IX	2.9	1.8	2.9	2.9
City of Zamboanga	3.5	3.2	3.1	3.1

*Source: Retail Price Survey of Commodities for the Generation of Consumer Price Index
 Philippine Statistics Authority*

**Year-On-Year change of average CPI for January to December 2024 vs.
 January 2025*



Figure 1. Inflation Rates for the Bottom 30% Income Households in Zamboanga City, All Items (2018=100)



Source: Retail Price Survey of Commodities for the Generation of Consumer Price Index Philippine Statistics Authority

a. Zamboanga City

1. Inflation Rate for the Bottom 30% Income Households

Zamboanga City’s inflation rate for the bottom 30% income bracket decelerated to 3.1 percent in January 2025 from 3.2 percent in December 2024. However, this was comparatively lower than the overall inflation rate of 3.5 percent recorded in January 2024 (Refer to Table A and Figure 1).

1.1 Main Drivers to the Downtrend of the Inflation Rate for the Bottom 30% Income Households

The decrease was primarily driven by the slower annual increase in *Housing, Water, Electricity, Gas and Other Fuels*, which decelerated to 8.8 percent from 10.2 percent in the previous month. In addition, the decline in prices within the indices of *Health*, with 3.0 percent from 5.8 percent inflation, and in *Personal Care, and Miscellaneous Goods and Services* at 2.4 percent from 3.0 percent, also contributed to the downtrend in the inflation rate for the bottom 30% income households in the city.

Lower increments were also observed in the following commodity groups:

- a. *Clothing and Footwear*, with 1.4 percent from 1.8 percent inflation in December 2024;
- b. *Furnishings, Household Equipment, and Routine Household Maintenance* at 6.0 percent from 7.1 percent; and,
- c. *Recreation, Sport and Culture*, 6.3 percent from 6.6 percent.



PSA RSSO IX, Dagdag Building, San Jose Road, Baliwasan, Zamboanga City
 Telephone: (062) 957-4636 Local 109
rss09@psa.gov.ph

In comparison, there were notable increases in the annual growth rates within the indices of *Food and Non-alcoholic Beverages*, 1.6 percent from 1.5 percent inflation, and *Transport*, which stood at 0.8 percent from 0.3 percent inflation.

Meanwhile, the following commodity groups retained their previous month's inflation rates:

- a. *Alcoholic Beverages and Tobacco*, 4.4 percent;
- b. *Information and Communication*, 0.1 percent;
- c. *Education Services*, 6.1 percent;
- d. *Restaurants and Accommodation Services*, 4.8 percent; and,
- e. *Financial Services* at 0.0 percent inflation.

1.2 Main Contributors to the Inflation Rate for the Bottom 30% Income Households

The top three (3) commodity groups contributing to the January 2025 inflation rate for the bottom 30% were the following:

- a) *Housing, Water, Electricity, Gas and Other Fuels*, contributing 48.2 percent share or 1.5 percentage points;
- b) *Food and Non-alcoholic Beverages* with 30.4 percent share or 0.9 percentage point; and,
- c) *Restaurants and Accommodation Services*, contributing 7.4 percent share or 0.2 percentage point.



PSA RSSO IX, Dagdag Building, San Jose Road, Baliwasan, Zamboanga City
Telephone: (062) 957-4636 Local 109
rss09@psa.gov.ph

Certificate No. PHP
QMS 24 95 0203 - 001

Table B. Year-on-year Inflation Rates for the Bottom 30% Income Households
in Zamboanga City, All items in Percent
January 2021 to January 2025
(2018=100)

MONTH	YEAR				
	2021	2022	2023	2024	2025
January	-0.3	4.9	6.3	3.5	3.1
February	1.5	3.0	7.4	3.9	
March	2.6	1.6	6.9	5.8	
April	2.9	2.6	5.4	5.8	
May	1.5	3.9	5.0	5.6	
June	1.6	5.5	4.5	5.3	
July	1.2	6.5	3.2	7.3	
August	1.9	6.6	4.6	6.0	
September	3.6	6.5	5.8	3.3	
October	3.6	6.5	5.1	4.2	
November	3.1	8.1	4.7	3.2	
December	3.1	7.6	4.8	3.2	
Average	2.2	2.2	5.3	5.3	3.1

**Source: Retail Price Survey of Commodities for the Generation of Consumer Price Index
Philippine Statistics Authority**



Table C. Inflation Rate by Commodity Group for the Bottom 30% Income Households in
ZAMBOANGA CITY
2018=100

Commodity Group	Inflation		
	January 2024	December 2024	January 2025
FOOD AND NON-ALCOHOLIC BEVERAGES	5.7	1.5	1.6
Food	6.2	1.5	1.5
Cereals and cereal products	20.7	(2.3)	(3.7)
Cereals	27.2	(4.0)	(5.4)
Rice	1.6	(4.1)	(5.4)
Corn	5.7	1.0	(2.2)
Flour, Bread and Other Bakery Products, Pasta Products, And Other Cereals	6.2	4.0	2.6
Meat and other parts of slaughtered landanimals	(2.7)	3.9	9.8
Fish and other seafood	(3.4)	1.7	2.7
Milk, other dairy products and eggs	13.9	2.9	0.4
Oils and fats	(0.1)	1.3	1.4
Fruits and nuts	9.7	33.2	26.1
Vegetables, tubers, plantains, cooking bananas and pulses	(7.2)	3.1	2.2
Sugar, confectionery and desserts	(0.3)	0.2	0.0
Ready-made food and other food products n.e.c.	(1.5)	3.4	7.2
ALCOHOLIC BEVERAGES AND TOBACCO	0.4	4.4	4.4
CLOTHING AND FOOTWEAR	1.0	1.8	1.4
HOUSING, WATER, ELECTRICITY, GAS AND OTHER FUELS	(1.8)	10.2	8.8
FURNISHINGS, HOUSEHOLD EQUIPMENT AND ROUTINE HOUSEHOLD MAINTENANCE	(0.2)	7.1	6.0
HEALTH	2.2	5.8	3.0
TRANSPORT	3.0	0.3	0.8
INFORMATION AND COMMUNICATION	0.0	0.1	0.1
RECREATION, SPORT AND CULTURE	1.6	6.6	6.3
EDUCATION SERVICES	18.5	6.1	6.1
RESTAURANTS AND ACCOMMODATION SERVICES	0.2	4.8	4.8
FINANCIAL SERVICES	0.0	0.0	0.0
PERSONAL CARE, AND MISCELLANEOUS GOODS AND SERVICES	1.6	3.0	2.4

Source: Retail Price Survey of Commodities for the Generation of Consumer Price Index
Philippine Statistics Authority



PSA RSSO IX, Dagdag Building, San Jose Road, Baliwasan, Zamboanga City
Telephone: (062) 957-4636 Local 109
rss09@psa.gov.ph

Certificate No. PHP
QMS 24 93 0203 - 001

2. Food Inflation

A stable inflation was observed in the monthly *Food inflation* for the bottom 30% Income Households in Zamboanga City, which remained at 1.5 percent in both December 2024 and January 2025. This was lower than the recorded *Food inflation* in January 2024, which stood at 5.7 percent inflation.

Meanwhile, slower inflation was observed in the following food commodities:

- a. *Milk, other dairy products and eggs*, with 0.4 percent from 2.9 percent;
- b. *Fruits and nuts*, which stood at 26.1 percent from 33.2 percent;
- c. *Vegetables, tubers, plantains, cooking bananas and pulses*, 2.2 percent from 3.1 percent; and,
- d. *Sugar, confectionery and desserts*, 0.0 percent from 0.2 percent inflation in December 2024.

On the contrary, an increase in prices were recorded in the following food commodities:

- a. *Meat and other parts of slaughtered land animals* at 9.8 percent from 3.9 percent;
- b. *Fish and other seafood*, 2.7 percent from 1.7 percent inflation;
- c. *Oils and fats*, 1.4 percent from 1.3 percent; and,
- d. *Ready-made food and other food products n.e.c.*, 7.2 percent from 3.4 percent inflation.

2.2 Main Contributors to the Food Inflation

Food inflation contributed 28.7 percent share or 0.9 percentage point to the overall inflation for the Bottom 30% Income Households in Zamboanga City. Moreover, the top three (3) Food groups contributing to the January 2025 food inflation were the following:

- a) *Meat and other parts of slaughtered land animals*, contributing 89.0 percent share or 1.3 percentage point;
- b) *Fruits and nuts*, contributing 68.6 percent share or 1.0 percentage points; and,
- c) *Fish and other seafood* with 53.1 percent share or 0.8 percentage point.

Note: CPIs and inflation rates for the bottom 30% income households by region and by province and selected city are posted at the PSA website (<http://openstat.psa.gov.ph/>).

for: 
MEWCHUN WS. PAMARAN
Regional Director


MFET/kxbl



PSA RSSO IX, Dagdag Building, San Jose Road, Baliwasan, Zamboanga City
Telephone: (062) 957-4636 Local 109
rss09@psa.gov.ph