



# SPECIAL RELEASE

## Summary Inflation Report Consumer Price Index for the Bottom 30% Income Households (2018=100)

Zamboanga City  
September 2024

Date of Release: 07 October 2024

Reference No. 240900-2312

**Table A. Year-on-Year Inflation Rates,  
for the Bottom 30% Income Household, All Items  
In Percent  
(2018=100)**

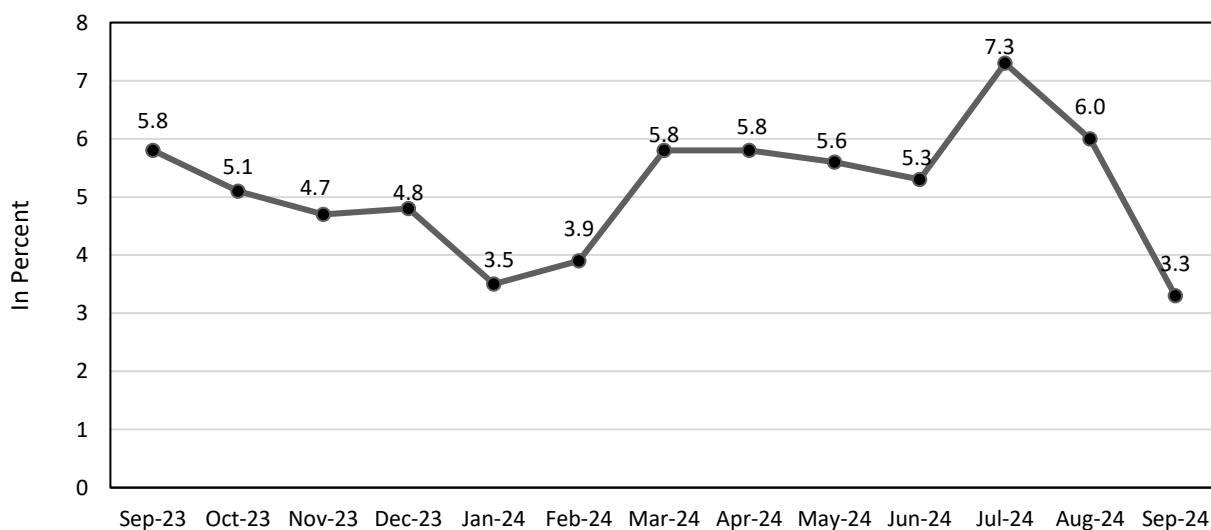
Area	September 2023	August 2024	September 2024	Year-to-date*
Region IX	7.7	4.9	1.9	5.0
City of Zamboanga	5.8	6.0	3.3	5.1

Source: Retail Price Survey of Commodities for the Generation of Consumer Price Index  
Philippine Statistics Authority

\*Year-on-year change of average CPI for January-September 2023 vs.  
January-September 2024



Figure 1. Inflation Rates for the Bottom 30% Income Households in Zamboanga City, All Items (2018=100)



Source: Retail Price Survey of Commodities for the Generation of Consumer Price Index Philippine Statistics Authority

## A. Zamboanga City

### 1. Inflation Rate for the Bottom 30% Income Households

The Zamboanga City’s inflation rate for the bottom 30% income bracket further decelerated to 3.3 percent in September 2024, showing continued decline from 6.0 percent in August 2024. Furthermore, the city’s average inflation from January to September 2024 stood at 5.1 percent. (Table A and Figure 1)

#### 1.1 Main Drivers to the Downtrend of the Inflation Rate for the Bottom 30% Income Households

The decrease in the inflation rate in September 2024 for the bottom 30% income households in Zamboanga City was mainly driven by the slower annual increase in the *Food and Non-alcoholic Beverages* index, which eased to 1.4 percent from 5.5 percent in the previous month. Furthermore, the decline in prices within the categories of *Housing, Water, Electricity, Gas and Other Fuels*, which posted 11.1 percent from 12.0 percent, and in *Transport* at 1.9 percent from 2.7 percent, also contributed to the downtrend in the inflation rate for the bottom 30% income households in the city.

In addition, lower increments were also recorded in the following commodity groups:

- a. *Recreation, Sport and Culture* with 5.0 percent from 5.2 percent inflation;



PSA RSSO IX, Dagdag Building, San Jose Road, Baliwasan, Zamboanga City  
 Telephone: (062) 957-4636 Local 109  
[rss09@psa.gov.ph](mailto:rss09@psa.gov.ph)

- b. *Education Services* also eased to 6.1 percent from 14.3 percent; and,
- c. *Personal Care, Miscellaneous Goods and Services* index at 2.6 from 2.7 percent in the previous month.

In comparison, there were notable increases in the annual growth rates within the following indices:

- a. *Clothing and Footwear*, which posted 1.4 percent from 1.3 percent;
- b. *Furnishings, Household Equipment and Routine Household Maintenance* with 6.6 percent from 5.5 percent;
- c. *Health*, 4.5 percent from 3.6 percent; and,
- d. *Restaurants and Accommodation Services*, 3.5 percent from 3.2 percent inflation in August 2024.

Meanwhile, the annual rates for the rest of the commodity groups in Zamboanga City remained consistent with those recorded in the previous month. (Table C)

### *1.2 Main Contributors to the Inflation Rate for the Bottom 30% Income Households*

The top three (3) commodity groups contributing to the September 2024 inflation rate for the bottom 30% were the following:

- a) *Housing, Water, Electricity, Gas and Other Fuels* with 55.3 percent share or 1.8 percentage points;
- b) *Food and Non-alcoholic Beverages*, contributing 24.4 percent share or 0.8 percentage points; and,
- c) *Restaurants and Accommodation Services*, contributing 4.9 percent share or 0.2 percentage point.



PSA RSSO IX, Dagdag Building, San Jose Road, Baliwasan, Zamboanga City  
Telephone: (062) 957-4636 Local 109  
[rss09@psa.gov.ph](mailto:rss09@psa.gov.ph)

Table B. Year-on-year Inflation Rates for the Bottom 30% Income Households  
in Zamboanga City, All items in Percent  
January 2020- September 2024  
(2018=100)

MONTH	YEAR				
	2020	2021	2022	2023	2024
January	3.3	-0.3	4.9	6.3	3.5
February	2.9	1.5	3.0	7.4	3.9
March	2.3	2.6	1.6	6.9	5.8
April	2.1	2.9	2.6	5.4	5.8
May	3.0	1.5	3.9	5.0	5.6
June	2.6	1.6	5.5	4.5	5.3
July	2.8	1.2	6.5	3.2	7.3
August	2.1	1.9	6.6	4.6	6.0
September	1.9	3.6	6.5	5.8	3.3
October	1.8	3.6	6.5	5.1	
November	1.3	3.1	8.1	4.7	
December	0.3	3.1	7.6	4.8	
<b>Average</b>	<b>2.2</b>	<b>2.2</b>	<b>5.3</b>	<b>5.3</b>	<b>5.1</b>

**Source: Retail Price Survey of Commodities for the Generation of Consumer Price Index  
Philippine Statistics Authority**



Table C. Inflation Rate by Commodity Group for the Bottom 30% Income Households in ZAMBOANGA CITY 2018=100

Commodity Group	Inflation		
	September 2023	August 2024	September 2024
<b>FOOD AND NON-ALCOHOLIC BEVERAGES</b>	<b>9.6</b>	<b>5.5</b>	<b>1.4</b>
<b>Food</b>	<b>10.3</b>	<b>6.0</b>	<b>1.6</b>
Cereals and cereal products	20.2	11.2	1.6
Cereals	25.8	13.4	0.8
Rice	26.3	13.4	0.8
Corn	2.9	12.4	2.5
Flour, Bread and Other Bakery Products, Pasta Products, And Other Cereals	3.3	3.9	4.4
Meat and other parts of slaughtered landanimals	(0.4)	3.3	3.7
Fish and other seafood	2.8	(0.7)	0.5
Milk, other dairy products and eggs	7.5	0.4	2.4
Oils and fats	(2.1)	(0.1)	(0.1)
Fruits and nuts	4.7	21.7	21.9
Vegetables, tubers, plantains, cooking bananas and pulses	13.4	6.5	(4.5)
Sugar, confectionery and desserts	13.9	(6.1)	(5.2)
Ready-made food and other food products n.e.c.	(0.2)	11.8	7.7
<b>ALCOHOLIC BEVERAGES AND TOBACCO</b>	<b>3.6</b>	<b>4.5</b>	<b>4.5</b>
<b>CLOTHING AND FOOTWEAR</b>	<b>2.1</b>	<b>1.3</b>	<b>1.4</b>
<b>HOUSING, WATER, ELECTRICITY, GAS AND OTHER FUELS</b>	<b>(4.4)</b>	<b>12.0</b>	<b>11.1</b>
<b>FURNISHINGS, HOUSEHOLD EQUIPMENT AND ROUTINE HOUSEHOLD MAINTENANCE</b>	<b>0.3</b>	<b>5.5</b>	<b>6.6</b>
<b>HEALTH</b>	<b>2.7</b>	<b>3.6</b>	<b>4.5</b>
<b>TRANSPORT</b>	<b>6.4</b>	<b>2.7</b>	<b>1.9</b>
<b>INFORMATION AND COMMUNICATION</b>	<b>0.7</b>	<b>0.1</b>	<b>0.1</b>
<b>RECREATION, SPORT AND CULTURE</b>	<b>2.4</b>	<b>5.2</b>	<b>5.0</b>
<b>EDUCATION SERVICES</b>	<b>18.5</b>	<b>14.3</b>	<b>6.1</b>
<b>RESTAURANTS AND ACCOMMODATION SERVICES</b>	<b>5.5</b>	<b>3.2</b>	<b>3.5</b>
<b>FINANCIAL SERVICES</b>	<b>0.0</b>	<b>0.0</b>	<b>0.0</b>
<b>PERSONAL CARE, AND MISCELLANEOUS GOODS AND SERVICES</b>	<b>2.2</b>	<b>2.7</b>	<b>2.6</b>

Source: Retail Price Survey of Commodities for the Generation of Consumer Price Index  
Philippine Statistics Authority



PSA RSSO IX, Dagdag Building, San Jose Road, Baliwasan, Zamboanga City  
Telephone: (062) 957-4636 Local 109  
[rss09@psa.gov.ph](mailto:rss09@psa.gov.ph)

## 2. Food Inflation

The monthly *Food inflation* for the bottom 30% Income Households in Zamboanga City decelerated to 1.6 percent in September 2024 from 6.0 percent in August 2024. This was comparatively lower than the recorded *Food inflation* in September 2023, which stood at 10.3 percent.

### 2.1 Main Drivers to the Downtrend of Food Inflation

The deceleration of Food inflation in September 2024 was primarily driven by a lower year-on-year increase in *Cereals and Cereal Products* index which stood at 1.6 percent from 11.2 percent in the previous month. Furthermore, the decrease of prices within the categories of *Vegetables, tubers, plantains, cooking bananas and pulses (ND)*, and *Ready-made food and other food products n.e.c. (ND)* also contributed to the downtrend which posted (4.5) percent from 6.5 percent, and 7.7 percent from 11.8 percent, respectively.

Contrarily, higher increments were observed in the following food commodity groups:

- a. *Meat and other parts of slaughtered land animals (ND)*, 3.7 percent from 3.3 percent;
- b. *Fish and other seafood (ND)* at 0.5 from (0.7) percent;
- c. *Milk, other dairy products and eggs (ND)*, which posted 2.4 percent from 0.4 percent;  
and,
- d. *Sugar, confectionery and desserts (ND)*, (5.2) percent from (6.1) percent inflation.

Meanwhile, the annual rates for the food index of *Oils and Fats* retained at (0.1) percent inflation in September 2024.



PSA RSSO IX, Dagdag Building, San Jose Road, Baliwasan, Zamboanga City  
Telephone: (062) 957-4636 Local 109  
[rss09@psa.gov.ph](mailto:rss09@psa.gov.ph)

## 2.2 Main Contributors to the Food Inflation

Food inflation contributed 23.5 percent share or 0.8 percentage points to the overall inflation for the Bottom 30% Income Households in Zamboanga City. Moreover, the top three (3) Food groups contributing to the September 2024 food inflation were the following:

- a) *Cereals and cereal products*, contributing 42.4 percent share or 0.7 percentage point;
- b) *Meat and other parts of slaughtered land animals (ND)* with 20.3 percent share or 0.3 percentage points; and,
- c) *Fruits and nuts (ND)*, contributing 34.8 percent share or 0.6 percentage point.

---

Note: CPIs and inflation rates for the bottom 30% income households by region and by province and selected city are posted at the PSA website (<http://openstat.psa.gov.ph/>).

*for:*  
  
**MEWCHUN WS. PAMARAN**  
Regional Director

  
MFET/kxbl

